

DESCRIPTION

The WLZ Series features an architecturally relevant low-profile LED design in lumen packages ranging from 1500 lumens to over 12,000 lumens. Its high-efficiency light engine is designed for optimal light control and distribution with zero uplight. This family of product is offered in several size housings to complement any building exterior and accommodates mounting heights up to 35'. Integral emergency battery backup available for path of egress with Cold Location operation down to -20°C.

SPECIFICATIONS

Construction

- Sleek die-cast aluminum housing with stainless steel hardware and powder coated black, bronze, silver or white finish
- UV-stabilized polycarbonate optical lens
- Integral heat sink for maximized heat dissipation
- Back box houses drivers away from LEDs and includes three 3/4" hubs (WLZ1 and WLZ2 - two 3/4" hubs)

Optics/LEDs

- Zero uplight design to minimize light pollution
- 15 to 100 Watt models replace up to 400 Watt HID for up to 70% energy savings
- Efficacies up to 123 LPW at 5000K to maximize utility rebates
- Type III and Type IV distributions for optimal light distribution (WLZ1 - Type III only)
- Available in 3000K, 3500K, 4000K and 5000K CCT
- L70 of 50,000 hours at 40°C
- CRI of ≥70

Electrical

- Class 2 power supply, 120-277VAC, 50/60Hz
- 347/480VAC Dedicated driver option for WLZ4, WLZ7 and WLZ10
- 0-10V Dimming driver (120-277VAC only)
- Power supply rated Class A EMI rating

Installation

- Housing hinges to back box and is secured with set screws
- Back box is complete with three 3/4" hubs and internal bubble level for easy installation (WLZ1 and WLZ2 - two 3/4" hubs)
- Mounts to a standard 3-1/2" or 4" square electrical J-box
- Suitable for downlight installation only

Options

Battery Backup

- Integral battery backup (BB) provides over 700 lumens and 90 minutes of runtime for path of egress. Rated for ambient temperatures of 0°C to 40°C (32°F to 104°F). Not available on WLZ1
- Integral Battery Backup with Internal Heater (BB-IH) provides over 700 lumens and 90 minutes of runtime for path of egress in Cold Locations down to -20°C. Not available on WLZ1 or WLZ2.
- Factory installed dual driver options for WLZ4 and WLZ10 (WLZ7 is standard with two drivers)
- Factory installed 120/277VAC button type photocontrol option (PC)
- Factory installed 10kVA surge protection options (SP or SPH)

Accessories (Field Installed)

- Bluetooth PIR motion sensor with daylight harvesting, black finish, (LE-WLZ-BL-12V-KIT)
- 120/277VAC Button type universal photocontrol options accessory (PCU)
- Bluetooth capable easily controlled with a smartphone

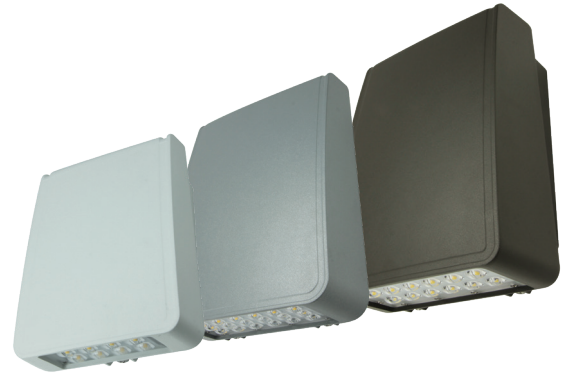
Testing & Compliance

- cULus Listed for Wet Locations
- International Dark Sky friendly approved product. (IDA) 3000K only
- Operating temperatures: -40°C to 40°C (-40°F to 104°F)

Warranty

- Five year warranty (terms and conditions apply)

Model: _____ Date: _____
 Accessories: _____
 Job Name: _____ Type: _____



Specs At A Glance*					
Model	WLZ1	WLZ2	WLZ4	WLZ7	WLZ10
Wattage (nominal)	15W	25W	40W	70W	100W
Lumens (lm)	1745	3198	5021	8729	12,393
Efficacy (LPW)	115	118	123	120	116
Equivalency (HID)	50W	100W	150W	250W	400W
Distribution	Type III, IV (WLZ1 Type III only)				
CCT	3000K, 3500K, 4000K, 5000K				
CRI	≥70				
Input Voltage	120-277VAC, 50/60Hz, 347/480V option				
Operating Temp	-40°C to 40°C (-40°F to 104°F)				
Certifications	UL Listed for Wet Locations, IDA				
Warranty	5 Years				
Weight	2.6 lbs	3.3 lbs	6.0 lbs	9.9 lbs	12.1 lbs

* Nominal Wattage, tested at 5000K CCT, Type III distribution. Values at 120/277VAC. See performance table for more detailed lumen information.

Note: Environment and application will affect actual performance. Typical values and 25°C (77°F) used for testing. Specifications subject to change without notice.

Ordering Information (Example: WLZ2-3-4K-BR)

Series/Configuration	Distribution	Input Voltage	CCT	Finish	Options
WLZ1 = 15W, Extra-Small	3 = Type III	BLANK = 120-277VAC	3K = 3000K	BL = Black	BB ⁵ = Battery backup
WLZ2 = 25W, Small	4 ² = Type IV	HVS ³ = 347/480VAC	35K ⁴ = 3500K	BR = Bronze	BB-IH ⁶ = Cold Location Battery backup (operation down to -20°C)
WLZ4 = 40W, Medium			4K = 4000K	SV ⁴ = Silver	DD ⁷ = Dual driver
WLZ7 ¹ = 70W, Large			5K = 5000K	WH ⁴ = White	PC = 120/277VAC Button photocontrol
WLZ10 = 100W, Extra-Large					SP = 120/277VAC Surge protection
					SPH = 347/480VAC Surge protection

litelogic Accessories⁸ (Field Installed)

LE-WLZ-BL-12V-KIT⁹ = Bluetooth Enabled Dimming Occupancy Sensor, PIR, Includes 12V Power Adapter, Black Finish

PCU = 120/277VAC Button photocontrol accessory

Notes

¹ Standard with two drivers	⁵ WLZ2, WLZ4, WLZ7 and WLZ10 only. 120/277VAC Only. Not compatible with DD and SPH options
² Not available for WLZ1 configuration	⁶ WLZ4, WLZ7 and WLZ10 only. 120/277VAC Only. Not compatible with DD and SPH options
³ WLZ4, WLZ7 and WLZ10 only, compatible with SPH option only	⁷ Dual driver option available for WLZ4 & WLZ10 only. Not compatible w/photocontrol option, consult factory
⁴ Consult factory for availability	⁸ Order as a separate line item. Shipped in separate box for final installation in the field
	⁹ Compatible with WLZ4, WLZ7 and WLZ10 only

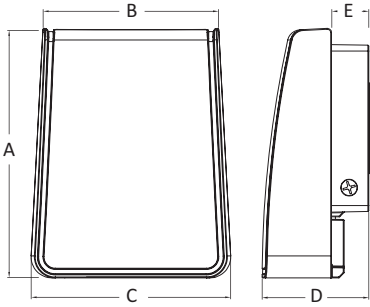
Performance Data

Model	Wattage (W)	CCT	Distribution	Lumen Output (lm)	Efficacy (LPW)
WLZ1-3-3K-XX	15	3000K	Type III	1531	101
WLZ1-3-4K-XX	15	4000K	Type III	1534	101
WLZ1-3-5K-XX	15	5000K	Type III	1745	115
WLZ2-3-3K-XX	25	3000K	Type III	2795	103
WLZ2-3-4K-XX	25	4000K	Type III	2997	111
WLZ2-3-5K-XX	25	5000K	Type III	3198	118
WLZ2-4-3K-XX	25	3000K	Type IV	2609	98
WLZ2-4-4K-XX	25	4000K	Type IV	2797	105
WLZ2-4-5K-XX	25	5000K	Type IV	2985	112
WLZ4-3-3K-XX	40	3000K	Type III	4389	107
WLZ4-3-4K-XX	40	4000K	Type III	4705	115
WLZ4-3-5K-XX	40	5000K	Type III	5021	123
WLZ4-4-3K-XX	40	3000K	Type IV	4021	98
WLZ4-4-4K-XX	40	4000K	Type IV	4310	105
WLZ4-4-5K-XX	40	5000K	Type IV	4599	112
WLZ7-3-3K-XX	70	3000K	Type III	7657	105
WLZ7-3-4K-XX	70	4000K	Type III	8193	113
WLZ7-3-5K-XX	70	5000K	Type III	8729	120
WLZ7-4-3K-XX	70	3000K	Type IV	6837	94
WLZ7-4-4K-XX	70	4000K	Type IV	7316	101
WLZ7-4-5K-XX	70	5000K	Type IV	7794	107
WLZ10-3-3K-XX	100	3000K	Type III	10,871	102
WLZ10-3-4K-XX	100	4000K	Type III	11,632	109
WLZ10-3-5K-XX	100	5000K	Type III	12,393	116
WLZ10-4-3K-XX	100	3000K	Type IV	9706	91
WLZ10-4-4K-XX	100	4000K	Type IV	10,385	98
WLZ10-4-5K-XX	100	5000K	Type IV	11,065	104

* Nominal Wattage. Values at 120/277VAC

** HVS configuration not DLC qualified

Dimensions

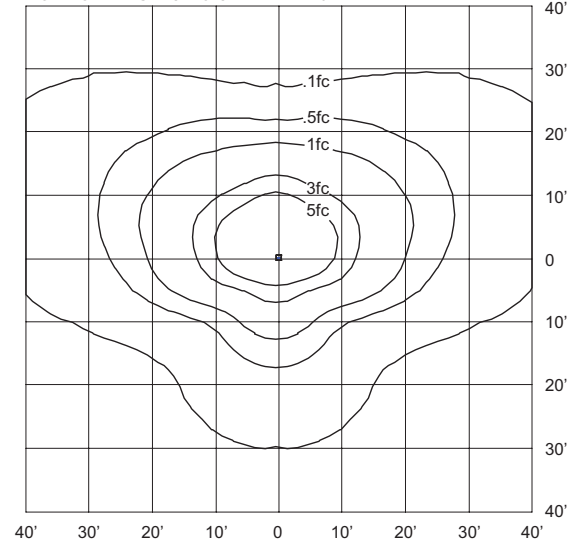


Model	A	B	C	D	E
WLZ1	6.7"	5.0"	5.6"	3.2"	1.4"
WLZ2	8.0"	5.7"	6.0"	3.2"	1.4"
WLZ4	10.2"	6.8"	7.8"	5.0"	1.9"
WLZ7	11.6"	8.3"	9.4"	5.0"	1.9"
WLZ10	11.6"	10.3"	11.5"	5.0"	1.9"

Sample Photometrics

WLZ4-3-5K

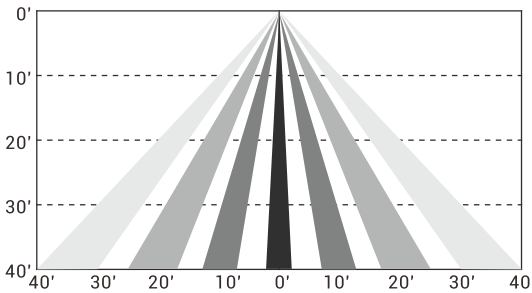
IES: TYPE III VERY SHORT
 MOUNTING HEIGHT: 10'
 TILT: ZERO
 HORIZONTAL SPACING CRITERIA: 2.0



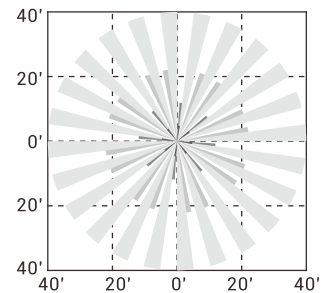
Sensor Details - Bluetooth Enabled (Accessory LE-WLZ-BL-12V-KIT) [Click here for sensor details](#)



Coverage Side View



Coverage Top View (40')



**SEE APP FOR
 SENSOR SETTINGS**

For a complete list of **LiteLogic** compatible products, [click here](#).



Get it from the **App Store**



Get it from **Google Play**

